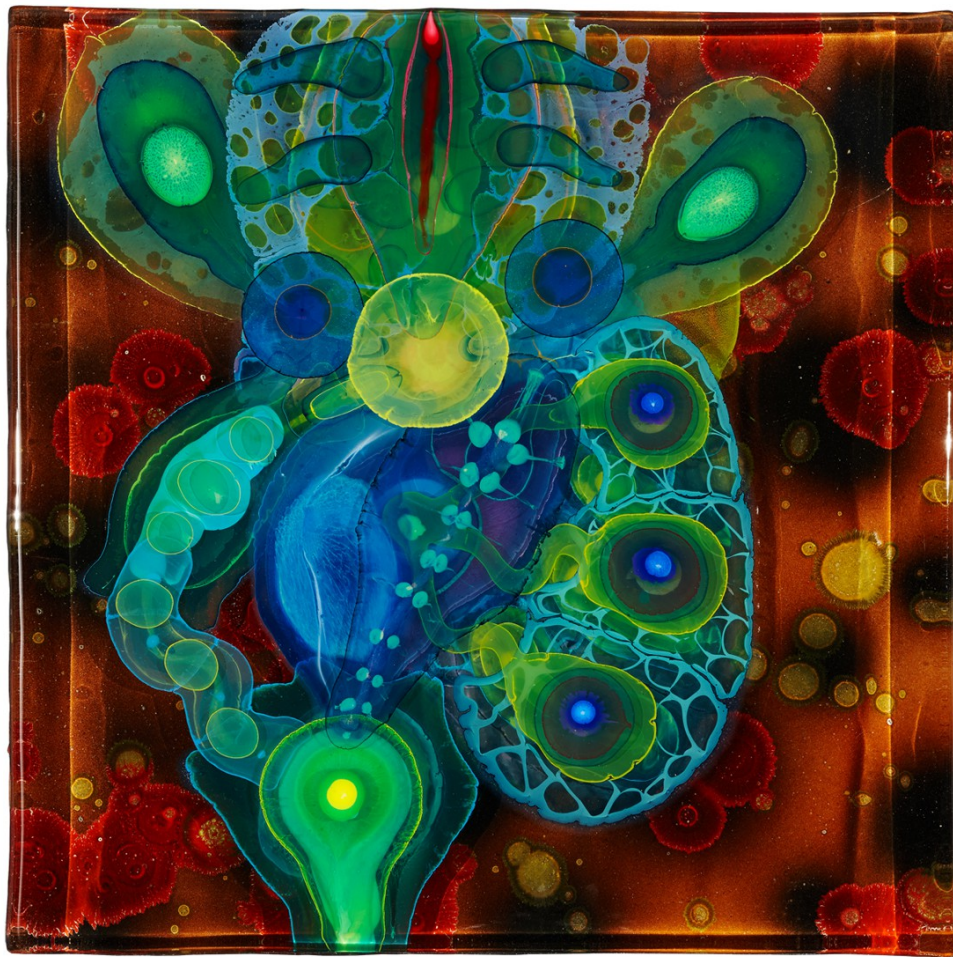


Clean



30 cm x 30 cm
12" x 12"

Clean is on a 1/4" panel. The paint / resin layer is 15/16" thick with a glossy resin top layer. The painting consists of five paint and five resin layers. The build up of these layers is a bit organic as can be seen in the image above. The finish resin layer was allowed to "roll over" creating a soft rounded edge that distorts light.